



PRODUCT LIST

15307 ROCKAWAY BLVD. JAMAICA, NY 11434 | 718-527-1244 | MEATBARNYC.COM

FOLLOW US ON:   @MEATBARNYC

BEEF

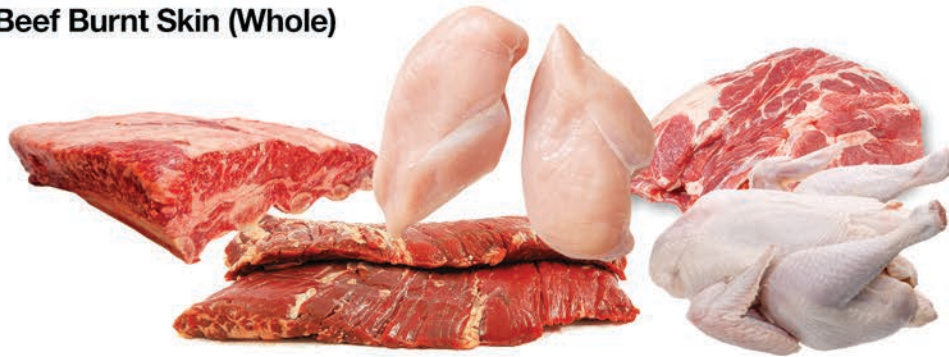
FRESH - Beef Peeled Knuckle
FRESH - Beef Top Round Inside (X-T)
FROZEN - Beef Bone In Short Rib
FROZEN - Ground Beef Tube (81/19)
FRESH - Beef Chuck Tender
FRESH - Beef Top Butt / Palomilla (X-T)
FRESH - Beef Outside Skirts
BEEF - Bone In Short Loin (Entero)
FRESH - Beef Flank Steak
BEEF - Sirloin Boneless Strip Loin
FRESH - Beef Boneless Ribeye
FROZEN - Imported Beef Oxtail (Whole)
FROZEN - Beef Single Livers
FROZEN - Beef Honey Comb Tripe (10#)
FROZEN - Beef Feet - USA (#1)
FROZEN - 333 Scalded Tripe (44#)
FROZEN - Beef Plain Scalded Tripe (30#)
FROZEN - Beef Kidney (60#)
FROZEN - Beef Burnt Skin (Whole)

PORK

CITY - Cured Pork Tails (Bucket) (35#)
CITY - Cured Pork Tails (Small) (6#)
FROZEN - Pork Feet (#1)
FROZEN - Whole Pig (20/30#)
FROZEN - Pork Ears (#1)
FROZEN - Salted Pork Feet
FROZEN - Pork Bone in Loin - Chuleta
FRESH - Pork Shoulder - Pernil
PORK - Bone in Rib Belly (Whole)
SMOKED - Pork Loins - Chuleta Ahumada
FRESH - Pork Spare Ribs
PORK - Boneless Belly (Whole)
FROZEN - Pork Capa - Fat Back
FRESH - Pork Boneless Butt
PORK - Fresh Boneless Loin (Lomo)
PORK - Fresh Boneless Cushion Meat
HARTFIELD - Pork Sausage Patties

POULTRY

AMICK - Chicken Paw (Feet) (33#)
B&E - 20075 - Boneless Chicken Breast
B&E - 22009 - Chicken Legs (Tray)
WOG - Whole Chicken (3.5#) (20HD)
WOG - Whole Chicken (3.25#) (22HD)
WOG - Whole Chicken (3#) (24HD)
FRESH - Heavy Fowl / Gallina
FRESH - Light Fowl / Gallinita
MT - Chicken Quarter Legs (Jumbo)
FRESH - Jumbo Chicken Wings
MOUNTAIRE - Chicken Gizzards (4/10#)
FRESH - Chicken Cutlets - Breast (4/10#)
FRESH - Chicken Cut Wings (Party Wing)
FRESH - Chicken Boneless Thigh
CG - Chicken Quarter Legs (Small)
PERDUE - Chicken Quarter Legs (Medium)
FRESH - Chicken Quarter Legs (Medium)
FRESH - Bone in Chicken Thighs
MOUNTAIRE - Chicken Backs
MOUNTAIRE - Chicken Cutlet Black Label
MOUNTAIRE - Chicken Livers
TOM - Turkey Wings Portion (V)



SEAFOOD

FISH - Smoked Herring Fillet (10#)
VENTURA - Pollock Fillet / Bacalao (1#)
VENTURA - Pollock Fillet / Bacalao (5#)
FISH - RED SNAPPERS (3/4 - 1#) (10#)
FISH - LANE SNAPPERS (3/4 - 1#) (10#)
FISH - Tilapia Fillet (3/5 Oz)
SHRIMP - Peeled & Devine 5x2# (16/20)
SHRIMP - Peeled & Devine 5x2# (51/60)
SHRIMP - Peeled & Devine 5x2# (26/30)
SHRIMP - Shell On (4# Block) (16/20)
FISH - Tilapia Fillet (5/7 Oz)
RUBY - Light Tuna In Water (4#)
FISH - Whole Tilapia (350-550) (10#)
FISH - Whiting Fillet (10#) (Bulk)
SHRIMP - Head On (4# Block) (50/60)
FISH - Swai Fillet - Basa (8/10) (22#)
FISH - King Steaks (4/8oz) (10#)
FROZEN - Coho Salmon Fillet (3/4#) (22#)
FROZEN - Chum Salmon Fillet 6oz ((10#))
FROZEN - Squid Tubes (China)
FISH - Whiting Fillet (4/6) (40# Block)
FROZEN - Whole Wild Squid (India)
MEREX - Pollock Fillet / Bacalao (1#)
FROZEN - Pollock Fillet 4/6oz ((40#))
BACALARICO - Pollock Fillet / Bacalao

USDA - PROCESSED MEAT

USDA - Fresh Beef Peeled Knuckle (Slice)
USDA - Beef Steer Short Rib (Slice)
USDA - Beef Chuck Tender (Slice)
USDA - Beef Meat Neck Bones (Slice)
USDA - Beef Top Butt - Palomilla (Slice)
USDA - Beef Short Loin T-Bone (Slice)
USDA - Beef Sirloin NY Strip (Slice)
USDA - Fowl Heavy (Slice)
USDA - Fowl Lite (Slice)
USDA - Beef Cut Oxtails (Net-Weight)
USDA - Beef Livers (Slice)
USDA - Beef Feet (Slice)
USDA - Pork Feet (Slice)
USDA - Mutton Meat (Slice/Cubes)
USDA - Beef Tripe (Slice-Cubes) (30#)
USDA - Beef Tripe (Small-Dice) (30#)
USDA - Steer Oxtails - Cut In The Box
USDA - Mutton Shanks (Slice/Cubes)
USDA - Mutton Legs (Slice/Cubes)
USDA - Burnt Goat Feet (Slice)
USDA - Beef Burnt Skin (Slice)
USDA - Pork Bone In Rib Belly (Slice)
USDA - Smoked Pork Loins (Slice)
USDA - Boneless Pork Butt (Slice)
USDA - Pork Spare Ribs (Slice)

USDA - Pork Spare Ribs (Slice)
USDA - Pork Loin - Chuleta (Slice)
USDA - Pork Boneless Belly (Slice)
USDA - Pork Shoulder - Pernil (Boneless)
USDA - Pork Shoulder - Pernil (Slice)
USDA - Pork Loin End (Punta) (Slice)
USDA - Tom Turkey Wings (V) (Slice)

LAMB & VEAL

FROZEN - Veal Hearts - Corazones
CATELLI - Ground Veal
IMPORTED - Boneless Lamb Legs
IMPORTED - Mutton Legs
IMPORTED - Mutton Meat (6-Way)
IMPORTED - Mutton Shank
BURNT - Goat Feet (Whole)



DAIRY

HILLDALE - American Cheese (160-Slice)
GREAT LAKES - Muenster Cheese Loaf
SOR - Mozzarella Cheese Loaf (6#)
BELLA - Grated Parmesan Cheese (4/5#)
SOR - Shredded Cheddar Cheese (6/5#)
SOR - Shredded Mozzarella Cheese (6/5#)
POLLY-O Mozzarella Cheese (16oz)
TROPICAL - Cheddar Cheese Papa (8oz)
DELI - Cream Cheese Bowl (4/5#)
TROPICAL - Queso Entero (Blanco)
TROPICAL - Queso Entero (Freir)
TROPICAL - Queso Blanco (12/10 oz)
TROPICAL - Queso De Freir (12/10 oz)
PHILADEPHIA - Cream Cheese (8 oz)
EGGS - X-Large (15 Dozen)
EGGS - 30 Dozen (Medium)
EGGS - 30 Dozen (Large)
EGGS - 30 Dozen (Large Brown)
EGGS - 30 Dozen (X-Large)
EGGS - Large (18 Pack)
EGGS - Extra Large (Loose)
EGGS - 24 Dozen (Jumbo)
PARKAY - Margarine Spread Maxi (Cup)
PARKAY - Margarine Spred (3#)
PARKAY - Margarine Sticks (1/4)

HAPPY BOY - Margarine Sticks (1#)
HOTEL BAR - Salted Butter Sticks (1#)
SUPERCH - Solid Block Margarine
WHOLE MILK - Gallons
WHOLE MILK - 1/2 Gallon
WHOLE MILK - 1/4 Quart
LACTAID MILK - Whole (96oz)
LACTAID MILK - (2%) (96oz)
TASTEE - Cheddar Cheese (Small) (1KG)
TASTEE - Cheddar Cheese (Large Can) (2.2)
FARMLAND - Heavy Cream 36% (12/32oz)
FARMLAND - Half & Half (12/32oz)
LAFE - Coconut Milk



VEGETABLES

PLANTAIN - Platano (Green / Verde)
FRESH CASSAVA - Yuca Fresca
LETTUCE - Iceburg Cello - Wrapped
TOMATO - Whole Tomatoes (4X6)
JAMAICAN - Hot Peppers
GREEN PEPPER - Aji Verde
THYME - Tomillo
KABOCHA - Ahuyama (Pumkin)
CABBAGE - Repollo (Bag)
FRESH GINGER - Jengibre
ONION - Cebolla (Roja / Red)
FRESH CORN - Maiz Fresco
FRESH - RED PEPPERS - (25#)
FRESH - Peeled Garlic - Ajo Pelado (5#)
BANANA - Guineo (Green / Verde)
CARROTS - Zanahoria
PLANTAIN - Platano (Ripe - Manduro)
YAM - Brazilian (Cush-Cush)
IDAHO POTATOES - Papa
ONION - Green Scallion
ONION - Cebolla (White / Spanish)



FROZEN

- FROZEN - Beef Meat Neck Bones
- DUTCH - Cooked Buffalo Wings (Spicy)
- PIERCE - Cooked Buffalo Wings (Mild)
- REGAL - Frozen Mix Vegetables (12/2.5#)
- REGAL - French Fries (3/8) (6/5#)
- TOWERISLE - Frozen Coco Bread
- ENDICO - Onion Rings
- FROZEN - Burnt Goat Head
- HAMBURGER - Beef Patties (4 oz)
- NORTHSIDE - Cooked Chicken Cutlet (844)
- HAMBURGER - Beef Patties (6 oz)
- LAFE - Discos Para Empanadas (13 oz)
- RICO - Discos Para Empanadas (14 oz)
- FROZEN - Original Philly Steaks (6 oz)
- LAFE - Caraminola (Bola de Yuca)
- LAFE - Potatoe Ball (Papa Rellena)
- RIO - Frozen Cassava / Yuca (6/5#)
- RICO - Discos Para Empanadas (20 oz)
- LAFE - Juice Pulp (Chinola / Parcha)
- LAFE - Juice Pulp (Guanabana)
- LAFE - Juice Pulp (Mango)
- LAFE - Juice Pulp (Mora)
- LAFE - Juice Pulp (Papaya)
- LAFE - Juice Pulp (Guava / Guayaba)
- LAFE - Juice Pulp (Pineapple)
- LAFE - Juice Pulp (Tamarindo)
- REGAL - French Fries (Steak Cut) (6/5#)
- REGAL - Frozen Sweet Potato Fries
- INDIANA - Sliced Bacon (30#)
- MI PUEBLO - Disco Empanadas (13 oz)
- MI PUEBLO - Disco Empanadas (18 oz)
- REGAL - California Blend (12/2#)
- REGAL - Cut Corn (20#)
- REGAL - Frozen Cut Okra (12/2#)
- REGAL - Chopped Spinach (20#)
- REGAL - French Fries Shoestring (1/4)
- REGAL - Frozen Green Beans (12/2#)
- REGAL - Seasoned Spicy Fries (6/4.5#)
- PORK KING - Italian Sausage (Hot)
- PORK KING - Italian Sausage (Sweet)
- PORK KING - Breakfast Little Sausage
- MARIAH - Sliced Bacon 13-17 (30#)
- SMITH - Farmland Bacon 14-18 (25#)
- SMITH - Precooked Bacon - (300 Slice)
- SABROSA - Frozen Green Pigeon Peas (50#)
- TOWERISLE - Baked Beef Patties (50ct)



DELI

- ARNOLD'S - Beef Sausage (Hot) (1#)
- ARNOLD'S - Beef Sausage (Mild) (1#)
- ARNOLD'S - Mild Beef Sausage (2.5#)
- ARNOLD'S - Mild Beef Sausage (5#)
- ARNOLD'S - Turkey Bacon (12oz) (Packs)
- STERLING - Hard Salami
- MAGNIFICO - Genoa Salami
- ARMOUR - Deli Ham (Pear-Shape)
- HORMEL - Low Salt Ham (13#)
- CIBAO - Salami Induveca (Short) (1#)
- CIBAO - Salami Induveca (Long)
- CIBAO - Salami Campesino (Long)
- SUPER VEGA - Extra Premium Salami
- BAR S - Chicken Frank
- GOYA - Salami Higueral 3353 (Long)
- GOYA - Salami Higueral 3354 (Small)
- DELI - 4X4 Swiss Cheese Loaf
- GODSHALL - Slab Turkey Bacon
- B&G - Kosher Pickle Chips (Slice)
- B&G - Kosher Dill Pickle (Whole)
- BOBORIS - Sliced Jalapeno Peppers
- DEL CARIBE - Longaniza (Loose / Suelta)
- DEL CARIBE - Longaniza (Packs / Packete)



PAPER & PLASTIC

PANS - Aluminum (Half Size Deep)

PANS - Aluminum (Full Size Deep)

BROWN PAPER BAG - (12#)

BROWN PAPER BAG - (16#)

BROWN PAPER BAG - (2#)

BROWN PAPER BAG - (20#)

BROWN PAPER BAG - (4#)

BROWN PAPER BAG - (6#)

BROWN PAPER BAG - (8#)

BROWN PAPER BAG - 500 Heavy (1/6)

DART - Plastic Clear Hinged C53 (#5)

DART - Plastic Clear Hinged C57 (#6)

PORTION - Cups & Lids (1 oz) (Combo)

FORKS - Heavy-Duty (Wrapped)

GARBAGE BAG - 100 (46 Gallon)

GARBAGE BAG - (Construction) (58 Gallon)

LID23 - Dome Lids - Tapa Clear (1#)

LID30 - Dome Lids - Tapa Clear (7")

LID34 - Dome Lids - Tapa Clear (9")

LID36 - Dome Lids - Tapa Clear (8")

LID40 - Dome Lids - Tapa Clear (6")

LIDS - Half Size Pan (Lids)

LIDS - Full Size Pan (Lids)

WHITE PAPER - Roll 15' MG (Glazed)

FILM - Food Wrap (914M) (18")

FILM - Food Wrap (910M) (12")

POLY - Plastic Clear Bags (8x4x18)

POLY - Clear Bags (Heavy Duty) (10x8x24)

SHOPPING BAG - TY (White) (1/8)

DELI GLOVES - Plastic Clear Poly (Large)

SHOPPING BAG - TY (White) (1/6)

DELI GLOVES - Vinyl (Large)

DELI GLOVES - Vinyl (X-Large)

DELI PAPER - Jumbo (EZ-15)

DELI PAPER - Jumbo (EZ-8)

DELI PAPER - Jumbo (EZ-12)

UTENCIL KIT - (3 Piece) (Medium Duty)

UTENCIL KIT - (4 Piece) (Medium Duty)

PORTION - Souffle 2500 (Cups) (1oz)

PORTION - Souffle 2500 (Cups) (2 oz)

PORTION - Souffle 2500 (Lids) (1 oz)

PORTION - Souffle 2500 (Lids) (2 oz)

Hinged Plates - Pebble Box - PP206

Hinged Plates - Pebble Box - PP225

Hinged Plates - Pebble Box - PP241

Hinged Plates - Pebble Box - PP883

Hinged Plates - Pebble Box - PP993

Hinged Plates - Pebble Box - PP993-S

PREMIUM - Shopping Bag - BLACK (700)

COFFEE CUPS - Vaso Cafe (10 oz)

COFFEE CUPS - Vaso Cafe (16 oz)

COFFEE CUPS - Vaso Cafe (12 oz)

COFFEE CUPS - Vaso Cafe (8 oz)

FS - Dinner Napkins (2-Ply)

COFFEE - Lids Tapas (Hot Cup) (10-20oz)

COFFEE - Lids Tapas (Hot Cup) (8oz)

TAPE - Packing 48MMX110 (30 Rolls)

LID - Board Lids (Flat) (6") (Carton)

PREMIUM - Wrapped Drinking Straws

PLENTY - Paper Towel Roll

ALUMINUM ROLL - Heavy Duty (12")

ALUMINUM ROLL - Heavy Duty (18")

ALUMINUM - Pop-Up Foil Sheets

PLATE - Aluminum Foil Pans (7")

PLATE - Aluminum Foil Pans (8")

PLATE - Aluminum Foil Pans 705 (1#)

FS - Premium Tall Fold Napkins

FS - Low Fold Napkins (8K) (1-Ply)

PLATE - Aluminum Foil Pans 747 (1.5#)

PLATE - Aluminum Foil Pans Slim (6")

PET - Clear Plastic Cold Cup (16 oz)

PET - Clear Plastic Cold Cup (24 oz)

PET - Lids Tapa (Cold Cup) (12-24 oz)

PET - Lids Tapa (Cold Cup) (8 oz)

SPOONS - Heavy-Duty (Wrapped)

WELLCARE - Nitrile Gloves (X-Large)

WY - Black Round Plates (Combo) (48 oz)

WY - Soup Containers (Combo) (16 oz)

WY - Soup Containers (Combo) (32 oz)

WY - Soup Containers (Combo) (8 oz)



BEVERAGE

POLAND SPRING - Water (Gallon)
POLAND SPRING - Water (15/1 Liter)
POLAND SPRING - Water (12/1.5 Liter)
POLAND SPRING - Water (Sport) (24/24oz)
POLAND SPRING - Water (40/16oz)
POLAND SPRING - Water (48/8oz)
D&G - Soda (Grape)
D&G - Soda (Gingerbeer)
D&G - Soda (Pineapple/Ginger)
D&G - Soda (Orange)
D&G - Soda (Kola Champ)
D&G - Soda (Cream Soda)
D&G - Soda (Pineapple)
TING - Soda (24/9.6oz) (Glass)
TROPICAL RYTHEM - Fruit Punch
TROPICAL RYTHEM - Guava Carrot
TROPICAL RYTHEM - Island Mango
TROPICAL RYTHEM - Lychee Paradise
TROPICAL RYTHEM - Mango - Carrot
TROPICAL RYTHEM - Pineapple - Ginger
TROPICAL RYTHEM - Pineapple - Guava
TROPICAL RYTHEM - Reggae Medley
TROPICAL RYTHEM - Sorrel - Ginger

DRY GOODS

JOLINA - Red Sherry Cooking Wine (Gal)
JOLINA - White Cooking Wine (Gal)
CELESTIAL - Chamomile Tea
CELESTIAL - English Breakfast Tea
CELESTIAL - Early Grey Tea
CELESTIAL - Authentic Green Tea
CELESTIAL - Lemon Zinger Tea
CELESTIAL - Peppermint Tea
CELESTIAL - Red Zinger Tea
CARIBBEAN RYTHEMS - Butter Beans (14oz)
DIAMOND CHOICE - White Rice (50#)
DOLE - Pineapple Juice (12/46oz)
EXCELL - Parboiled Rice (50#)
FURMANO - Butter Beans (6/10#)
HUNT'S - Ketchup Can (#10)
HUNT'S - Tomato Paste (#10)
JANS - Sweet Condensed Milk (24/14oz)
PA - Pure Creamed Coconut Cream
SPRING FARM - Evaporated Milk (24/12oz)
DART - Souffle Portion Cup (1oz)
POCAS - Honey Ginger Tea Original
POCAS - Chamomile Tea (Organic)
POCAS - Peppermint Tea (Organic)
POCAS - Moringa & Lemon Tea (Organic)
POCAS - Moringa & Green Tea (Organic)
SPUR TREE - Calaloo (24/19oz)
SWISS MISS - Milk Chocolate Cocoa
WY - Hot Sauce Packet (500 pk)
SMART - Flour Tortilla (24/30oz)
SPUR TREE - Ackee (24/19oz)
PASTA - DEKOTA - Elbow Macarroni
PASTA - DEKOTA - Penne Rigate
PASTA - DEKOTA - Spagetti (10")
DART - Portion Lids (1oz)
RED&GOLD - Ketchup Packs (1000ct)
VALUE - Granulated White Sugar (55#)
FRESH - Roasted Coffee (72pk)
BEANS - Habichuela (Pinto) (50#)
BEANS - Habichuela (Small Red) (50#)
BEANS - Habichuela (Red Kidney) (50#)
BEANS - Habichuela (Black) (50#)
OPENPIT - BBQ Sauce (Gallon)
RICELAND - White Rice (50#)
MORTON - Rock Snow Salt (25#)
MORTON - Cooking Salt (50#)
BEANS - Habichuela (Cranberry) (50#)
BEANS - Dry Pigeon Peas (50#)
DOMINOS - Granulated White Sugar (50#)
OPENPIT - BBQ Sauce (5 Gal) (Bucket)
TEXAS - Fry Chicken Breeding
GRACE - Hot Pepper Sauce (12oz)
CARIDOM - Fideos (20/14oz)
QUAKER - Quick Oats (42oz)
AUNT JEMIMA - Pancake Mix
TATE & LYLE - Corn Starch
WINGOLD H&R - All Purpose Flour (2/25#)
OPENPIT - BBQ Sauce (Gal) (Hickory)
GENERAL MILL - Flour (Full Strength)
CORN MEAL - Yellow Fine (50#)
SABROSA - Green Pigeon Peas (Can)



SEASONING

KLECKNER - Egg Color (Gal)
BERTOLLI - Alfredo Sauce (12/15 oz)
BLUE M - Browning (12/33.5 oz)
HOT BLUE M - Curry Powder (5#) (Hot)
MILD BLUE M - Curry Powder (5#) (Mild)
EAGLE - Cinnamon Sticks (3#)
FOOD TASTE - Black Pepper (7#)
FOOD TASTE - Pure Granulated Garlic (7#)
FOOD TASTE - Lemon Juice (Gallon)
FOOD TASTE - Oregano (2/5#)
SMUCKER - Grape Jelly Glass (48 oz)
WALKERS - Jerk Seasoning (24/10 oz)
EAGLE - Lemon Juice (32 oz)
WALKERS - Jerk Seasoning (Spicy) (9.25#)
WALKERS - Jerk Seasoning (Mild) (9.25#)
WALKERS - Jerk Seasoning (Spicy) (50#)
AJINOMOTO - MSG Seasoning
RAGU - Traditional Pasta Sauce (12/45oz)
EAGLE - Chicken Base (Bucket) (25#)
EAGLE - Caramel Color (Gal)
EAGLE - Egg Shade (Gal)
EAGLE - Whole All Spice (4#)
EAGLE - Soy Sauce (Gal)
EAGLE - Lemon Juice (Gal)
ALCAPARRADO - Manzanilla Olives (Gal)

EAGLE - Hot Sauce (Gal)
SUPERCH - White Vineger - (Gal)
EAGLE - Vanilla (Gallon)
EAGLE - Granulated Onion (5#)
GOYA - Agrio De Naranja (Gal)
EAGLE - Adobo With Sazon (5#)
GRACE - Chicken Soup Mix (12/60g)
GRACE - Cock Soup Mix (12/50g)
GRACE - Fish Soup Mix (12/45g)
GRACE - Pumpkin Soup Mix (12/45g)
CARIDOM - Oregano (Molido) (5/2#)
RANCHERO - Soy Sauce - (12/23 oz)
RANCHERO - Soy Sauce - (Gallon)
AUNT JEMIMA - Pancake Syrup - (Gal)
GOYA - Mojo Criollo (Gal)
CARIDOM - Vanilla Negra (Gal)
EAGLE - Potatoe Whitener
PLOY - Sweet Chili Sauce
EAGLE - Beef Base (Bucket) (25#)
EAGLE - Crushed Red Pepper (4#)
EAGLE - Cayenne Pepper (5#)
EAGLE - Ground Ginger (5#)
EAGLE - Adobo With Pepper (5#)
EAGLE - Adobo No Pepper (5#)
EAGLE - Spanish Paprika (5#)

EAGLE - Seasoning Salt (10#)
EAGLE - Granulated Onion (Bucket) (25#)
EAGLE - Season Salt (Bucket) (25#)
GRAVY MASTER - Browning (Gallon)
EAGLE - Adobo With Pepper (Bucket) (25#)
EAGLE - Adobo No Pepper (Bucket) (25#)
EAGLE - Pure Granulated Garlic (25#)
GRACE - Strawberry Syrup (12/25.5 oz)
SPUR TREE - Browning (24/4.8 oz)
SPUR TREE - Curry Powder (5#)
SPUR TREE - Liquid Curry Seasoning (Gal)
SPUR TREE - Festival Mix (12/16oz)
SPUR TREE - Jerk Seasoning (Gallon)
SPUR TREE - Oxtail Seasoning (12/13.9 oz)
SPUR TREE - Oxtail Seasoning (Gal)
SPUR TREE - Scotch Bonnet (5 oz)
DRY - Oregano (Entero / Whole)
CHERRY PEPPERS - (Hot/Sweet) (Gal)



CONDIMENTS

LOIN - Buffalo Sauce (1/2 Gal)
LOIN - Grill Blazin Hickory BBQ (Gal)
ADMIRATION - French Dressing (Gal)
ADMIRATION - Italian Dressing (Gal)
ADMIRATION - Real Mayonaise (Gal)
ADMIRATION - Mustard Dressing (Gal)
ADMIRATION - Ranch Dressing (Gal)
KRAFT - Original BBQ Sauce (Gal)
KRAFT - French Dressing (Gal)
KRAFT - Golden Italian Dressing (Gal)
KRAFT - Honey Mustard Dressing (Gal)
KRAFT - Russian Dressing (Gal)
KEN'S - Sweet Chili Sauce (Gal)
Sweet Baby Ray's - Original BBQ Sauce
Sweet Baby Ray's - Garlic Parmesan Sauce
Sweet Baby Ray's - Mango Habanero
Sweet Baby Ray's - Sweet Red Chili Sauce

CLEANING

MEMBER - Commercial Dish Detergent (Gal)
PINE-SOL Multi-Surface Disinfectant 100
PALMOLIVE - Dish Washing Soap (Gal)
BLEACH - (Gallon)
SIMONIZ - 969 (Heavy-Duty Degreaser)
SIMONIZ - Emeraldal (Dish Washing Soap)
SIMONIZ - Lemon Deodorizer (Gal)
SIMONIZ - Lavalosso (All-Purpose Cleaner)

OILS

OASIS - Clear Shortening Oil (35#)
OASIS - Soybean Oil (35#)
ADMIRATION - MagicFry Oil (Shortening)

